

Xerox Integrated Fieri® Color Server For the Xerox 700 Digital Color Press

Need world-class colour with workflow tools that put you in command? The Integrated Fieri® Color Server for the Xerox 700 Digital Color Press is the right choice.

Productivity starts with a fast RIP

You get fast RIP speeds for Adobe and Microsoft Office files with the Fieri® Smart RIP speeds.

Simplify and streamline the work

Automate job submission of repetitive job types to achieve productive, error-free workflows with Hot Folders and Virtual Printers.

Get the colour right

Produce precise, exact colour from all applications, platforms and formats with Fieri® ColorWise® colour management tools.

Turn up the impact with variable information

Customise your output to a specific audience with varying text, photos and graphics with the Integrated Fieri® Color Server's basic Variable data printing capabilities.

Open it up to your Windows environment

Connect to the Fieri® from your native Windows file directory and interact seamlessly with your standard Windows experience with the Fieri® Bridge.

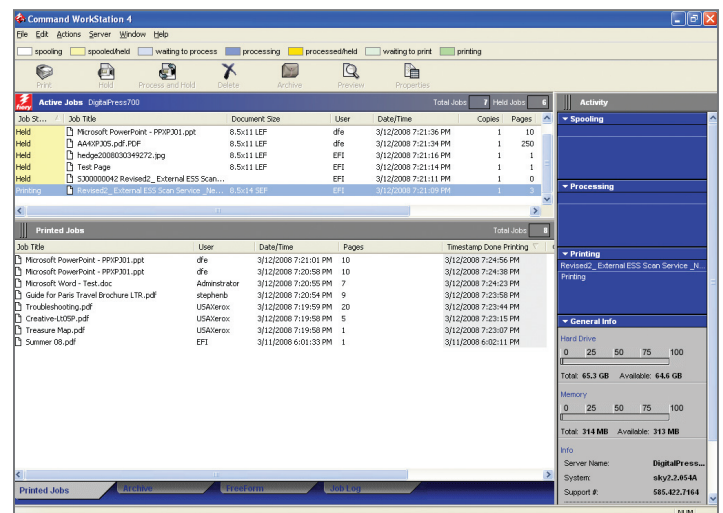
A perfect finish

Create booklets using in-line Saddle Stapling, Perfect and Gang-Up off-line finishing.

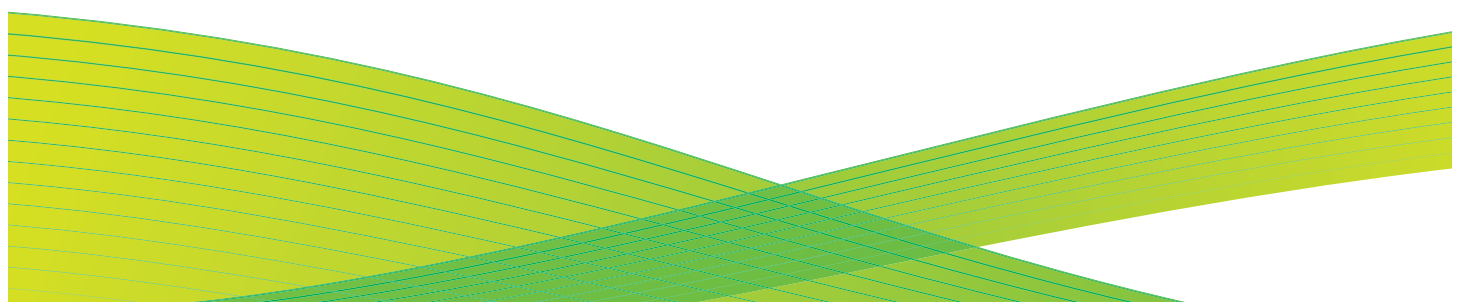
A secure production environment

Concerned about security? So are we. Your administrators will appreciate the Integrated Fieri® Color Server's complete toolset covering all aspects of document and device security.

For more information on the Integrated Fieri® Color Server for the Xerox 700 Digital Color Press, please contact your Xerox representative or visit us online at www.xerox.com



Integrated Fieri® Color Server



Xerox Integrated Fiery® Color Server

Digital Colour Press Supported

Xerox® 700 Digital Color Press

Processor

Intel® Celeron® 1.86 GHz

Memory

512 MB

Hard Disk Drive

80 GB

Controller Operating System

Linux

Network Connectivity

Ethernet 10/100/1000 Base-T Autosensing

Page Description Languages

- Adobe® PostScript® 3™ (v3017)
- PCL 6C (emulation)

Print Specifications

- Print resolution
- 2400 x 2400 dpi
- Pages per minute
- Up to 70 ppm colour

Scan Resolution

200 x 200 dpi, 300 x 300 dpi, 400 x 400 dpi, 600 x 600 dpi

Maximum Image Size

- Print
- Maximum Area –
12.6 x 18.7 in (323 x 480 mm)
 - Maximum Guaranteed –
12.4 x 18.7 in (317 x 480 mm)

Print Drivers

Fiery® Driver 3.0 (Bi-Directional) support for:

- Windows 2000®
- Windows XP®
- Windows 2003® Server
- Windows Vista®
- Mac OS® 10.2.3 and later

Driver Certification

WHQL Certified

Fiery® Utilities

- Command® WorkStation 4.6
- EFI™ ColorWise® Pro Tools
- Fiery® WebTools
- Fiery® Remote Scan
- Fiery® FreeForm™ for Variable Data Printing
- Spot-On® Colour
- Auto Trapping
- Hot Folders / Virtual Printers

Calibration

- ColorCal® (standard)
- X-Rite® DTP 32 Series II Densitometer (optional)
- Also supports X-Rite® DTP41/34 and ES-1000

Document Management

- RIP 1 While Print 2
- Smart RIP
- Continuous Print
- Face-up and Face-down printing
- Fiery® Scan and Scan-to-Job templates
- Fiery® Driver 3.0 based booklet creation
 - Booklet Maker 3.0

Standard Colour Profiles

- SWOP-Coated
- DIC
- ISO-Coated
- Euroscale
- ISO-Uncoated
- TOYO Offset Coated 2.0
- EFI™ ES-1000 Spectrophotometer

Fonts

- 136 Adobe fonts
- 80 PCL 6C (emulation) fonts

Options

- Secure Disk Erase
- Color Profiler Suite
- 512 MB memory upgrade
- EFI™ Splash RPX-iii™ Workflow Software
- Scan to PC Desktop®
 - USB Cable Print Kit

Security

- Secure Disk Erase (option)
- Scan to mailbox
- SNMPv3
- IP Sec
- 802.1x
- SSL/TLS
- User Authentication
- IP Filtering / Port Blocking
- System Update
- IPv6

Power Requirements

Controller power supplied by the Xerox 700 engine. No additional power service is required. 110v – 20 Amp / 220 – 240v – 10 Amp

Contact your Xerox representative for details to find out more about adding a bit of colour to your business.

